

## BASIC PDU

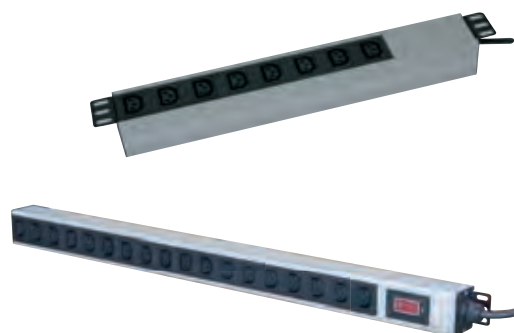
**Density** Single-power inlet; 4-18 outlets per rack-mount 1.5U enclosure Max 36 outlet for vertical 0U models

**Power** 115VAC-230VAC, 50/60 Hz, 16 or 32-Amp power inlet options.

Single or 3 phase option

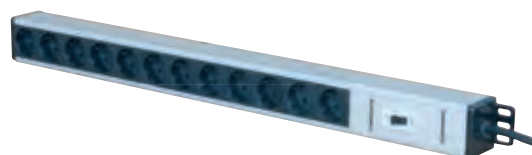
### IEC C13 TYPE

Product Code	Product Description
Horizontal	
PB-C06-010-116	1,5U 19" Aluminum 6 way with circuit breaker
PB-C06-100-116	1,5U 19" Aluminum 6 way with on/off switch (*)
PB-C08-100-116	1,5U 19" Aluminum 8 way with on/off switch (*)
Vertical	
PB-C08-010-116	1,5U Vertical Aluminum 8 way with circuit breaker
PB-C12-010-116	1,5U Vertical Aluminum 12 way with circuit breaker
PB-C16-010-132	1,5U Vertical Aluminum 16 way with circuit breaker
PB-C18-010-132	1,5U Vertical Aluminum 18 way with circuit breaker



### GERMAN TYPE (SCHUKO)

Product Code	Product Description
Horizontal	
PB-S04-100-116	1,5U 19" Aluminum 4 way with on/off switch (*)
PB-S04-010-116	1,5U 19" Aluminum 4 way with circuit breaker
PB-S06-100-116-W	1U 19" Aluminum 6 way with on/off switch (*)
PB-S06-010-116-W	1U 19" Aluminum 6 way with circuit breaker
PB-S08-000-116-W	1U 19" Aluminum 8 way (*)
PB-S08-100-116-W	1U 19" Aluminum 8 way with on/off switch (*)
Vertical	
PB-S08-010-116-W	1U Vertical Aluminum 8 way with circuit breaker
PB-S12-010-116	1,5U Vertical Aluminum 12 way with circuit breaker
PB-S16-000-132	1,5U Vertical Aluminum 16 way (*)
PB-S16-010-132	1,5U Vertical Aluminum 16 way with circuit breaker
PB-S18-010-132	1,5U Vertical Aluminum 18 way with circuit breaker



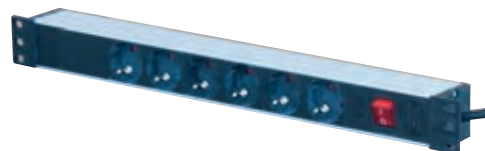
### UK TYPE

Product Code	Product Description
Horizontal	
PB-U05-100-113	1,5U 19" Aluminum 5 way with on/off switch (*)
PB-U05-010-113	1,5U 19" Aluminum 5 way with circuit breaker
Vertical	
PB-U07-100-113	1,5U Vertical Aluminum 7 way with on/off switch (*)
PB-U08-100-113	1,5U Vertical Aluminum 8 way with on/off switch (*)
PB-U08-010-113	1,5U Vertical Aluminum 8 way with circuit breaker
PB-U12-100-113	1,5U Vertical Aluminum 12 way with on/off switch (*)
PB-U12-010-113	1,5U Vertical Aluminum 12 way with circuit breaker
PB-U16-010-132	1,5U Vertical Aluminum 16 way with circuit breaker
PB-U18-010-132	1,5U Vertical Aluminum 18 way with circuit breaker



## FRENCH TYPE

Product Code	Product Description
Horizontal	
PB-F06-100-116-W	1U 19" Aluminum 6 way with on/off switch (*)
PB-F06-010-116-W	1U 19" Aluminum 6 way with circuit breaker
PB-F08-100-116-W	1U 19" Aluminum 8 way with on/off switch (*)
PB-F09-000-116-W	1U 19" Aluminum 9 way (*)
Vertical	
PB-F08-010-116	1,5U Vertical Aluminum 8 way with circuit breaker
PB-F12-010-116	1,5U Vertical Aluminum 12 way with circuit breaker
PB-F16-010-132	1,5U Vertical Aluminum 16 way with circuit breaker



## UNIVERSAL TYPE

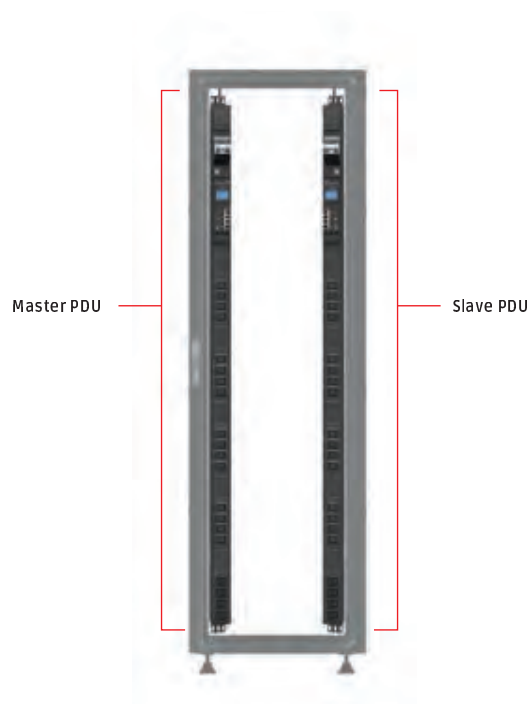
Product Code	Product Description
Horizontal	
PB-E06-100-116	1U 19" Aluminum 6 way with on/off switch (*)
PB-E06-010-116	1U 19" Aluminum 6 way with circuit breaker
PB-E08-100-116	1U 19" Aluminum 8 way with circuit breaker
Vertical	
PB-E08-010-116	1U Vertical Aluminum 8 way with on/off switch (*)



For other options please contact to your sales representative

Canovate® can make changes without notification

\*Protection should be located in power distribution panel for the models without circuit breakers



## Metered PDU

**Density** Single-power inlet; 6-11 outlets per rack-mount 1.5U enclosure Max 32 outlet for vertical 0U models

**Power** 115VAC-230VAC, 50/60 Hz, 16 or 32-Amp power inlet options.

**Input Current Monitor** Precisely measure the aggregate current (in amps) of power inlet. On-site verification of the input current with the LED digital display. (Optional voltage monitor)



Numeric Led display with ampermeter module Measures current between 0 and 30 A



Product Description	Schuko Type	UK Type	IEC C13 Type
Horizontal			
1,5U 19" Aluminum 6 way with Ampermeter (*)	PA-S06-000-116	PA-U06-000-116	PA-C06-000-116
Vertical			
1,5U Vertical Aluminum 12 way with Ampermeter (*)	PA-S12-000-116	PA-U12-000-116	PA-C12-000-116
1,5U Vertical Aluminum 16 way with Ampermeter (*)	PA-S16-000-132	PA-U16-000-132	PA-C16-000-132
1,5U Vertical Aluminum 18 way with Ampermeter (*)	PA-S18-000-132	PA-U18-000-132	PA-C18-000-132

## PROTECTED PDU

**Density** Single-power inlet; 5-10 outlets per rack-mount 1.5U enclosure, Max 32 outlet for vertical 0U models

**Power** 115VAC-230VAC, 50/60 Hz, 16 or 32-Amp power inlet options.

**Protection** Surge & spike protection, Circuit breaker, optional ON/OFF switch



Product Description	Schuko Type	UK Type	IEC C13 Type
Horizontal			
1,5U 19" Aluminum 5 way with Ampermeter, SP (*)	PA-S05-001-116		PA-C05-001-116
1,5U 19" Aluminum 5 way with Ampermeter, CB	PA-S05-010-116 **	PA-U05-010-113 **	PA-C05-010-116
1,5U 19" Aluminum 4 way with Ampermeter, CB+SP	PA-S04-011-116 **		PA-C04-011-116 **
Vertical			
1,5U Vertical Aluminum 12 way with Ampermeter, SP (*)	PA-S12-001-116	PA-U12-001-113	PA-C12-001-116
1,5U Vertical Aluminum 12 way with Ampermeter, CB	PA-S12-010-116	PA-U12-010-113	PA-C12-010-116
1,5U Vertical Aluminum 10 way with Ampermeter, CB+SP	PA-S10-011-116	PA-U10-011-113	PA-C10-011-116
1,5U Vertical Aluminum 16 way with Ampermeter, SP (*)	PA-S16-001-132	PA-U16-001-132	PA-C16-001-132
1,5U Vertical Aluminum 16 way with Ampermeter, CB	PA-S16-010-132	PA-U16-010-132	PA-C16-010-132
1,5U Vertical Aluminum 14 way with Ampermeter CB+SP	PA-S14-011-132	PA-U14-011-132	PA-C14-011-132
1,5U Vertical Aluminum 18 way with Ampermeter, SP (*)	PA-S18-001-132	PA-U18-001-132	PA-C18-001-132
1,5U Vertical Aluminum 18 way with Ampermeter, CB	PA-S18-010-132	PA-U18-010-132	PA-C18-010-132
1,5U Vertical Aluminum 16 way with Ampermeter CB+SP	PA-S16-011-132	PA-U16-011-132	PA-C16-011-132

SP : Surge Protector CB : Circuit Breaker

\* Protection should be located in power distribution panel for the models without circuit breakers

\*\* Designed for vertical