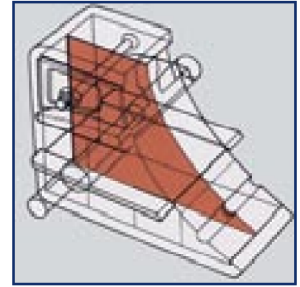
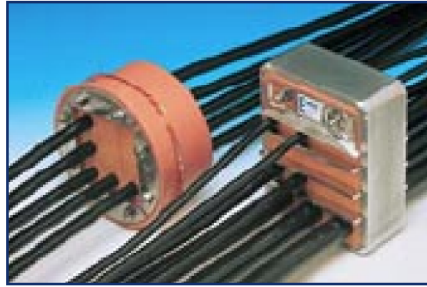


## EMC Protection

The E series frames and components provide the same protection as the standard MCT Brattberg system but with added, built-in protection against electromagnetic pulse (due to lightning or nuclear blast) and interference, electronic sabotage (synthetic EMP) and static electricity. The secret is a tempered metal sheet which systematically stops electrical current from passing along the cable screening through the seal and successfully function as an extended wall screen. All dimensions are exactly the same for the standard MCT Brattberg components.



### E-RGP

The E-RGP is a round Lycron frame for assembly in sleeves. A tempered metal sheet forms the contact between insert block and sleeve. The seal is available in 5 sizes with the designations E-RGP -50, -70, -100, -150 and -200 (for dimensions see page 29).

The E-RGP transit is manufactured from Lycron. The metal fittings are galvanised, mild steel or stainless steel finish.



### Sleeves

Pipe sleeves are fabricated from 8mm thick seamless pipe and are used to house the E-RGP seal.



### Frames

Frames are available in 4 sizes, designated -2, -4, -6, and -8 depending on height. The internal width is always 120mm and the depth is 60mm.

### Material

The frames are manufactured in the following materials:

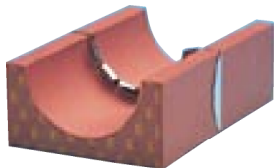
- Steel
- Stainless steel
- Aluminium

Steel, natural or with a hot dipped galvanised finish.

# Components

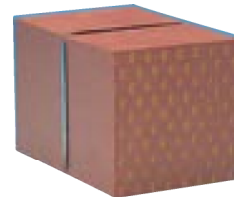
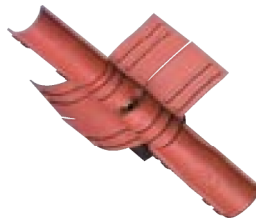
## E-Insert Blocks/AddBlocks

Seal each cable and pipe individually. The tempered metal sheet forms a contact between the cable braid or pipe and frame. Insert blocks with hole diameters from 4 up to 54mm.



## E-Spare Blocks

Seal the unused space in the frame for future installation. The tempered metal sheet forms a contact between surrounding blocks and the frame.



## Marking

EMP Blocks are marked on one end to show correct installation.

## Stayplates

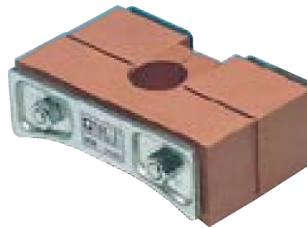
Placed between each row of insert blocks to aid installation and to increase mechanical stability. Material: Brass.



## Endpacking E-STG

The E-STG Endpacking is installed between the compression plate and the frame to make the seal complete and EMC-tight. The tempered metal sheet forms a contact between the frame and the compression plate.

Hardware is either galvanised mild steel or stainless steel.



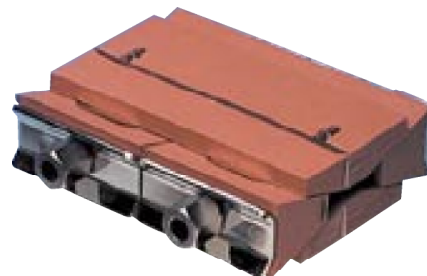
## Compression Plate

Fitted before the last row of insert blocks. The bolt in the compression plate is tightened to compress the system. Material: Galvanised Cast iron.



## Presswedge E-PTG-120

E-PTG Presswedge can be used alternative to STG Endpacking and the Compression Plate and can also be installed in any position in the frame. Hardware is either galvanised mild steel or stainless steel.



## Tweezers

Grips the tempered metal sheet and assists insertion of the last row of blocks.



**EMP Blocks & components are identified with a 'E' prefix e.g. E-30/12, ESTG etc**

- The Company
- Why MCT Brattberg
- The Products
- Multiple Frames
- Planning the Packing Space
- Frames for Marine/Offshore
- Frames for Civil/Industry
- RGP Frames & Seals
- Blocks & Components
- Frame Installation Methods
- Packing Guides
- EMC Protection**
- Deck & Bulkhead Glands
- SR Cable & Pipe Seals
- MSR Cable Glands
- X-Series Cable Transit
- Transit Planning Software