

DX (Refrigerant R 410A) Based Cooling

- 28 kW cooling capacity in 42U 300x1000 Cabinet
- Automatically controlled between 11 to 28 kW by Inverter technology for maximum energy efficiency
- EER is above 3 for maximum energy efficiency
- External Compressor unit to have better noise level
- Cooling units work sensible (minimized condensed water)
- Specially developed for cold & hot aisle containment applications
- Modular construction
- In-Row Technology
- No raised floor required
- Variable speed fans - EC-Technology
- Modular design, Allows capacity expansion
- Hot-swappable fans
- The copper pipes can come either from the top or from the bottom of the unit according to the request
- Temperature controlled fans
- Remotely control and monitor coolers with optional SNMP card.

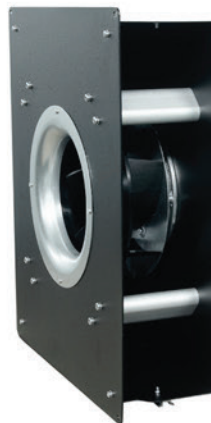


CERTIFIED

Product Code	Description (230VAC 50Hz/60Hz)
DC-FDXX-4230-A/B01EU0/1-R0/R1	DX Front Cooler 28 kW 42U 300 x 1000 with refrigerant R410A
DC-FDXX-4232-A/B01EU0/1-R0/R1	DX Front Cooler 28 kW 42U 300 x 1200 with refrigerant R410A
DC-FDXX-4730-A/B01EU0/1-R0/R1	DX Front Cooler 28 kW 47U 300 x 1000 with refrigerant R410A
DC-FDXX-4732-A/B01EU0/1-R0/R1	DX Front Cooler 28 kW 47U 300 x 1200 with refrigerant R410A



Multipoint Injection system distributing R410 agent more efficiently within the heat exchanger unit



Pressure Controlled EBM-Papst EC Fans

Hot-swappable EC fan Drawer



Outdoor DX Unit-R410A
(Combined Compressor & Condenser)



CAREL
LCD Screen

* X : Color code = 7: RAL 7035 (Grey); 9: RAL 9005 (Black)