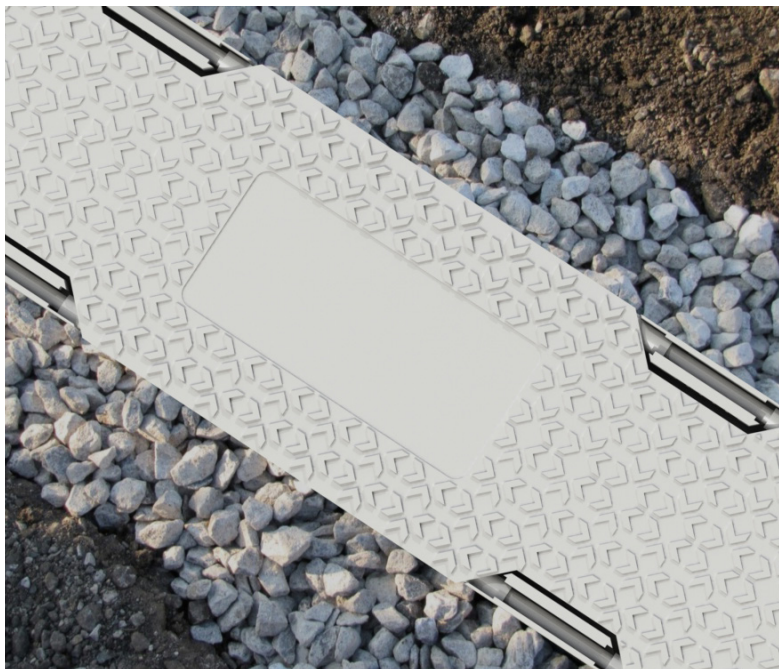
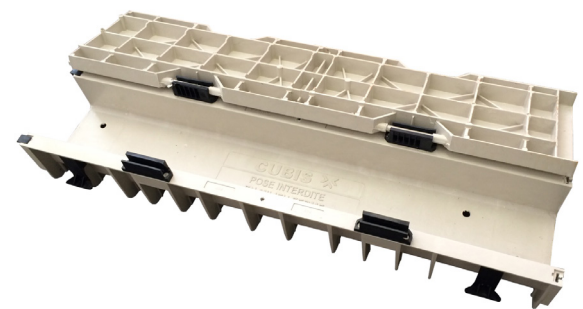


Cable Trough MM

Strong, secure and lightweight cable trough

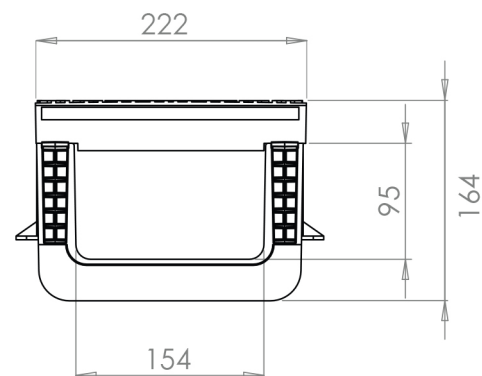
- Optimised to be light in weight (under 10kg per unit) but does not compromise on strength
- Ribbed externally for excellent sidewall strength
- Complete unit meets a 1.5T (A15) vertical test load
- Covers are dual hinged on either side and can be opened in either direction
- Covers can be locked and opened individually or as a combination of several covers
- Designed with feet on the side of the unit to key-in into the surrounding ballast
- Cover lid is domed to allow water to drain off but raised tread pattern is level
- Unit is pre-fitted with base holes for drainage or anchoring
- Cable trough units in a run can be removed and replaced easily
- GRP has very low expansion and is not affected by static
- 1-3° of movement possible with connected units. Accessories range to overcome larger bends.
- Can be made fire-retardant for use in tunnels
- Units connect together for with jointing pegs



Product Profile

Weight: 4.9kg (body) | 3.6kg (cover)
8.5kg (total)
Length: 1000mm
Material: Glass Reinforced Polyester Resin

Section Profile



CUBIS reserves the right to make changes to this document

Contact us:

Head Office: 4 Silverwood Industrial Estate, Lurgan, Co. Armagh, BT66 6LN, Northern Ireland

web: www.cubisindustries.com **email:** info@cubisindustries.com **telephone:** +44 (0)28 38 313 100